

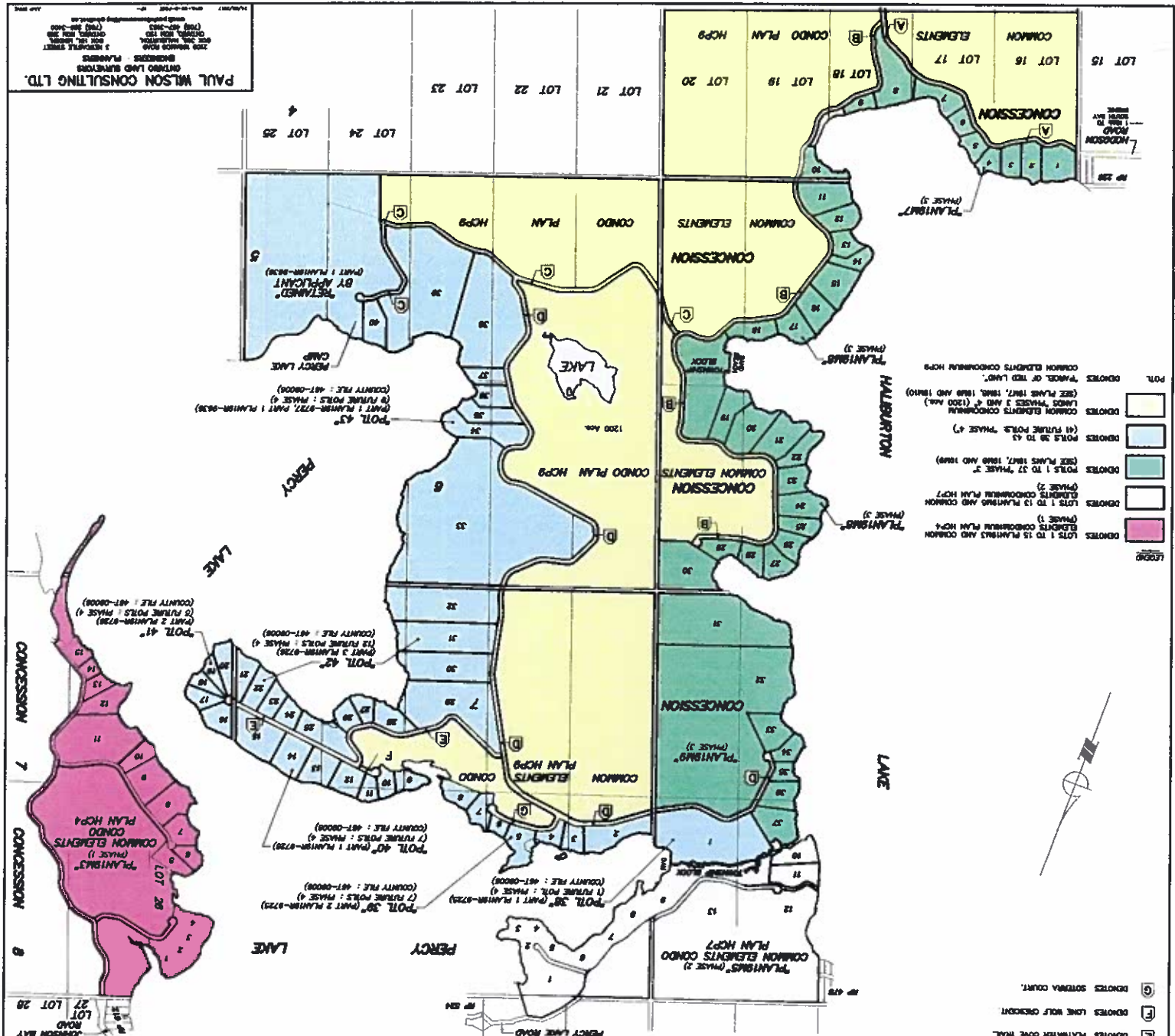
SKETCH SHOWING EXISTING AND PROPOSED DEVELOPMENT PHASES 1 TO 4
HARBURTON AND PERCY LAKES
GEOGRAPHIC TOWNSHIP OF HARBURTON
COUNTY OF HARBURTON
PAUL WILSON O.L.S. PLAN

OWNER: 2481938 ONTARIO INC.
 2000 METERS

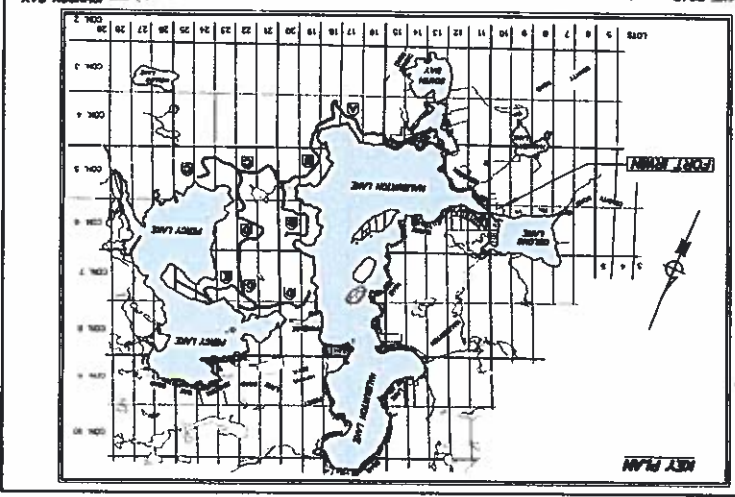
PHASE 3 & 4 ROAD NAMES

- A) DROUGHTS HODGSON ROAD
- B) DROUGHTS BURLWOOD TRAIL
- C) DROUGHTS BRAYSON TRAIL
- D) DROUGHTS ALPINE RIDGE DRIVE
- E) DROUGHTS PLATYMER COVE TRAIL
- F) DROUGHTS LONG WOLF CREEKWAY
- G) DROUGHTS SORBERA COURT

- LEGEND**
- DROUGHTS LOTS 1 TO 15 PLANS AND COMMON ELEMENTS CONDOMINIUM PLAN HCP 4 (PHASE 1)
 - DROUGHTS LOTS 1 TO 13 PLANS AND COMMON ELEMENTS CONDOMINIUM PLAN HCP 7 (PHASE 2)
 - DROUGHTS PLOTS 1 TO 37 PHASE 3 (SEE PLANS 1817, 1818 AND 1819)
 - DROUGHTS PLOTS 38 TO 43 (41 FUTURE PLOTS PHASE 4)
 - DROUGHTS COMMON ELEMENTS CONDOMINIUM LANDS PHASES 3 AND 4 (1300 AC.) (SEE PLANS 1817, 1818 AND 1819)
 - DROUGHTS COMMON ELEMENTS CONDOMINIUM HOUSING PHASES OF THE LAKE
 - DROUGHTS POLS



PAUL WILSON CONSULTING LTD.
 2200 BRIMLEY ROAD
 SCARBOROUGH, ONTARIO M1S 4T6
 TEL: (416) 291-1111
 FAX: (416) 291-1112
 E-MAIL: paul@wilsonconsulting.com



PERCY LAKE LOTS
SUMMARY OF AREAS & FRONTAGES

<u>LOT</u>	<u>AREA</u> (Acres)	<u>FRONTAGE</u> (Lineal)	<u>FRONTAGE</u> (Chord)
1	31.7	2369'	1965'
2	8.92	1224'	1067'
3	4.15	456'	417'
4	3.78	466'	412'
5	6.03	1637'	529'
6	1.88	300'	276'
7	3.98	575'	485'
8	4.65	1083'	570'
9	3.11	1095'	526'
10	2.74	300'	297'
11	2.15	398'	361'
12	3.71	490'	487'
13	5.63	525'	514'
14	5.88	495'	490'
15	9.44	653'	647'
16	5.24	805'	736'
17	3.46	554'	471'
18	2.40	349'	311'
19	2.37	328'	316'
20	4.20	565'	344'
21	3.78	467'	445'
22	4.47	360'	340'
23	3.81	316'	310'
24	3.93	379'	367'
25	8.95	478'	448'
26	3.46	519'	481'
27	2.72	416'	389'
28	3.71	327'	304'
29	21.60	496'	468'
30	14.16	511'	492'
31	15.27	505'	486'
32	22.26	588'	576'
33	109.27	2920'	2592'
34	9.49	736'	488'
35	5.83	354'	316'
36	4.51	223'	208'
37	2.90	280'	272'
38	33.48	645'	384'
39	47.24	1115'	945'
40	5.77	390'	371'
41	164.77	2920'	2330'