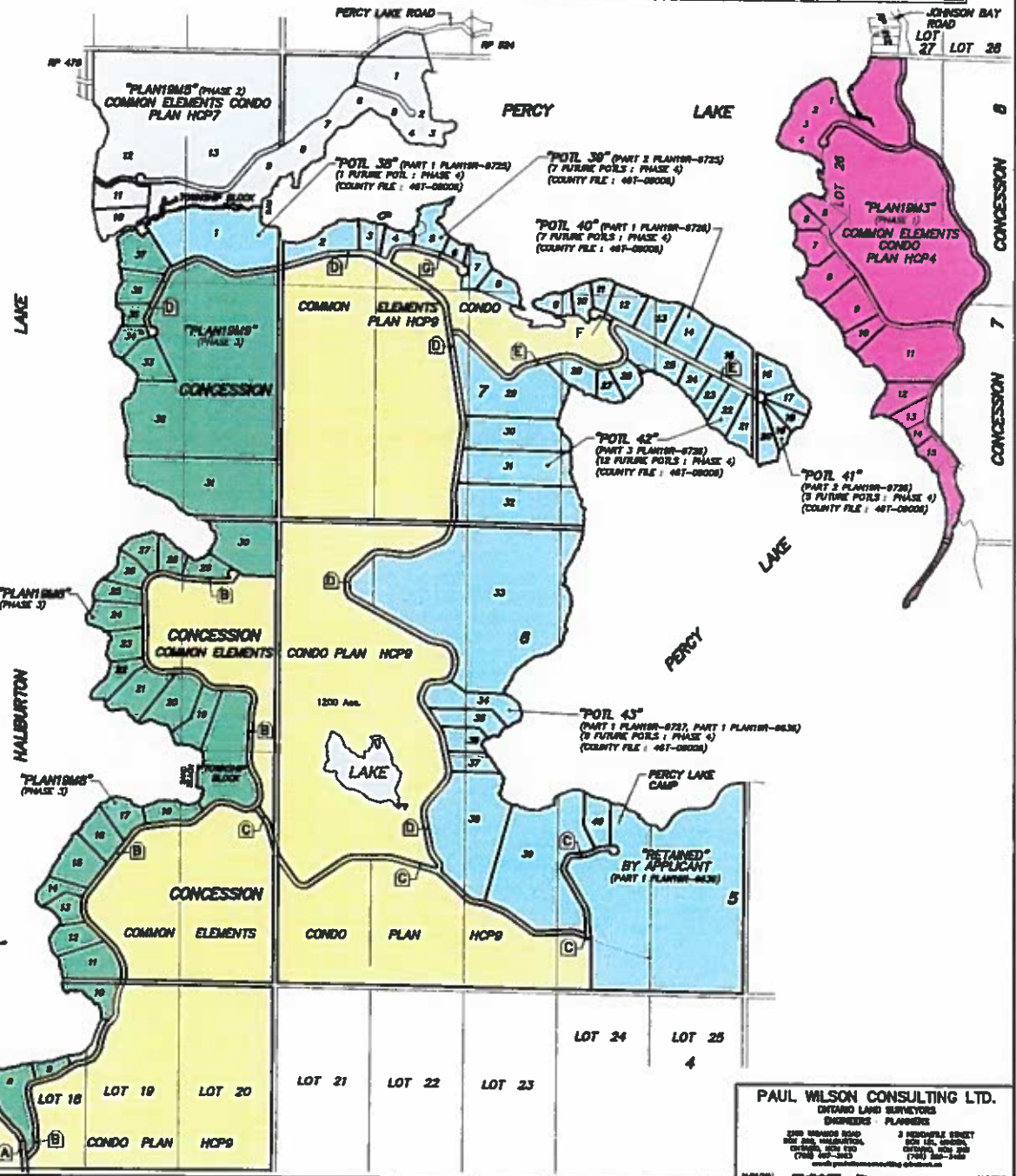
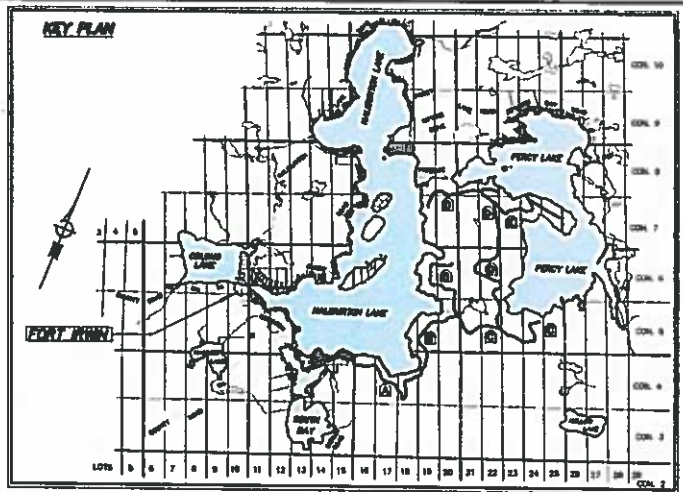


**SKETCH SHOWING EXISTING AND PROPOSED DEVELOPMENT
HALBURTON AND PERCY LAKES
"PHASES 1 TO 4"
GEOGRAPHIC TOWNSHIP OF HARBURN
MUNICIPALITY OF BYSTART et al
COUNTY OF HALBURTON
PAUL WILSON O.L.S. P.ENG.**

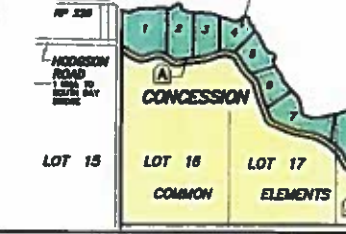
OWNER: 2481938 ONTARIO INC.

PHASE 3/4 ROAD NAMES

- (A)** DENOTES HODGSON ROAD.
- (B)** DENOTES BURLYWOOD TRAIL.
- (C)** DENOTES BRYSON TRAIL.
- (D)** DENOTES ALPINE RIDGE DRIVE.
- (E)** DENOTES FLATWATER CREEK TRAIL.
- (F)** DENOTES LONG WOLF CRESCENT.
- (G)** DENOTES SOTERNA COURT.



- CONDOS**
- DENOTES LOTS 1 TO 15 PLANTINGS AND COMMON ELEMENTS CONDOMINIUM PLAN HCP4 (PHASE 1)
 - DENOTES LOTS 1 TO 15 PLANTINGS AND COMMON ELEMENTS CONDOMINIUM PLAN HCP7 (PHASE 2)
 - DENOTES POTS 1 TO 37 "PHASE 3" (SEE PLANS 18A7, 18A8 AND 18A9)
 - DENOTES POTS 38 TO 43 (41 FUTURE POTS: "PHASE 4")
 - DENOTES COMMON ELEMENTS CONDOMINIUM LANDS "PHASES 3 AND 4" (1200 Ave.) (SEE PLANS 18A7, 18A8, 18A9 AND 18A10)
- POTL** DENOTES "PARCEL OF TED LAND" COMMON ELEMENTS CONDOMINIUM HCP9



PAUL WILSON CONSULTING LTD.
 ONTARIO LAND SURVEYORS
 ENGINEERS PLANNERS
 2300 HODGSON ROAD SUITE 200, HALBURTON, ONTARIO, N0B 1Y0
 (705) 361-3443
 paul@paulwilsonconsulting.com

